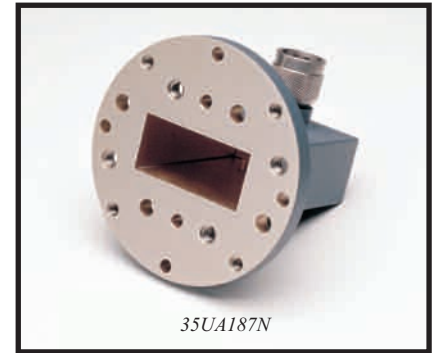


INSTRUMENTATION GRADE WAVEGUIDE ADAPTERS

35U, 35C Series 3.3 to 26.5 GHz



The 35U and 35C Series precision adapters transform standard waveguide to coaxial Type N and K Connector® interfaces.

Features

- 3.3 to 26.5 GHz frequency coverage
- Type N connector compatibility
- K Connector® compatibility with SMA and 3.5 mm

Specifications

Model	Frequency range (GHz)	Connectors	W/G flange	SWR
35UM40N	3.3 to 4.9	WR229 to N(m) WG11A to N(m)	PDR40	1.08
35UM48N	3.9 to 5.8	WR187 to N(m) WG12 to N(m)	CAR48, PAR48, UAR48, PDR48	1.08
35UM70N	5.8 to 8.2	WR137 to N(m) WG14 to N(m)	CAR70, PAR70, UAR70, PDR70	1.08
35UM84N	7.0 to 10	WR112 to N(m) WG15 to N(m)	CBR84, UBR84, PBR84, PDR84	1.08
35UM100N	8.2 to 12.4	WR90 to N(m) WG16 to N(m)	CBR100, UBR100, PBR100, PDR100	1.08
35UM120N	10 to 15	WR75 to N(m) WG17 to N(m)	CBR120, UBR120, PBR120, PDR120	1.08
35UM140N	12.4 to 18	WR62 to N(m) WG18 to N(m)	CBR140, UBR140, PBR140, PDR140	1.08
35UM220K	17 to 26.5	WR42 to K(m) WG20 to K(m)	CBR220, UBR220, PBR220, PDR220	1.20
35UA187N	3.9 to 5.8	WR187 to N(m) WG12 to N(m)	CPR187F, CPR187G, UG-1352/U, UG-1353/U, UG-1728/U, UG-1729/U, UG-148/U, UG-149A/U	1.08

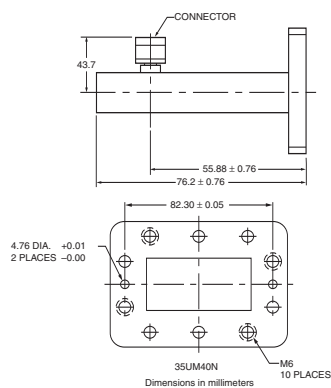
Specifications

Model	Frequency range (GHz)	Connectors	W/G flange	SWR
35UA137N	5.8 to 8.2	WR137 to N(m) WG14 to N(m)	CPR137F, CPR137G, UG-1356/U, UG-1357/U, UG-1732/U, UG-1733/U, UG-343B/U, UG-344/U, UG-440B/U, UG-441/U	1.08
35UA112N	7.0 to 10	WR112 to N(m) WG15 to N(m)	CPR112F, CPR112G, UG-1358/U, UG-1359/U, UG-1734/U, UG-1735/U, UG-52B/U, UG-51/U, UG-137B/U, UG-138/U	1.08
35UA90N	8.2 to 12.4	WR90 to N(m) WG16 to N(m)	CPR90F, CPR90G, UG-1360/U, UG-1361/U, UG-1736/U, UG-1737/U, UG-40B/U, UG-39/U, UG-135B/U, UG-136/U	1.08
35UA62N	12.4 to 18	WR62 to N(m) WG18 to N(m)	UG-541A/U, UG-419A/U, UG-1665/U, UG-1666/U	1.08
35UA42K	17 to 26.5	WR42 to K(m) WG20 to K(m)	UG-596A/U, UG-595/U, UG-597/U, UG-598A/U	1.08

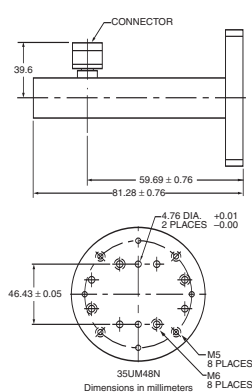
INSTRUMENTATION GRADE WAVEGUIDE ADAPTERS

35U, 35C Series 3.3 to 26.5 GHz

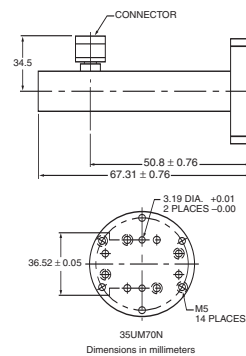
Outline Drawings



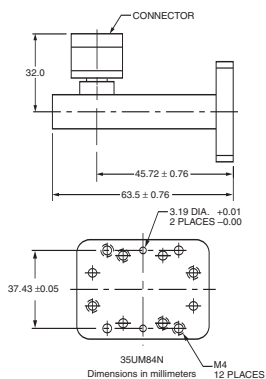
35UM40N outline



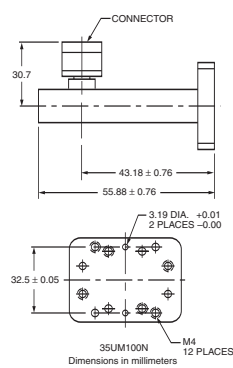
35UM48N outline



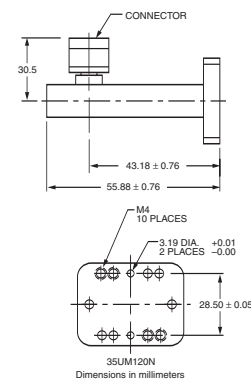
35UM70N outline



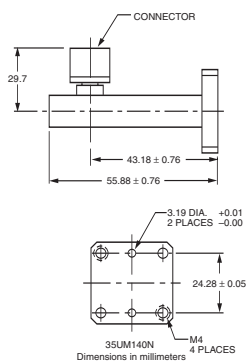
35UM84N outline



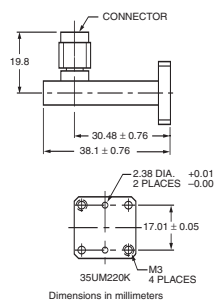
35UM100N outline



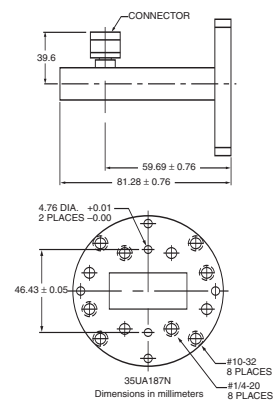
35UM120N outline



35UM140N outline



35UM220K outline

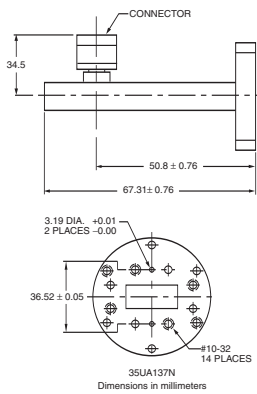


35UA187N outline

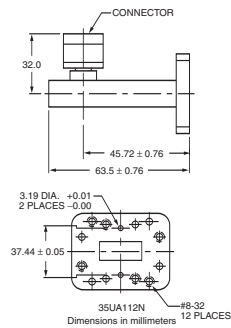
INSTRUMENTATION GRADE WAVEGUIDE ADAPTERS

35U, 35C Series 3.3 to 26.5 GHz

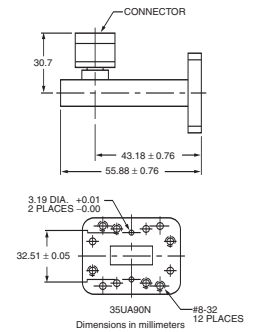
Outline Drawings



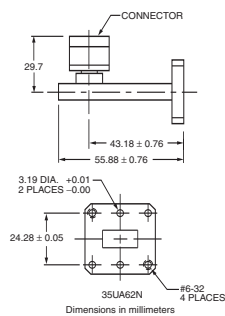
35UA137N outline



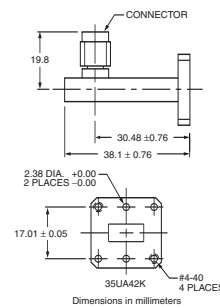
35UA112N outline



35UA90N outline



35UA62N outline



35UA42K outline

Ordering information

Please specify model/order number, name, and quantity when ordering.

Model/Order No.	Name
	Coaxial adapter
35UM40N	N(m), metric, 3.30 to 4.90 GHz
35UM48N	N(m), metric, 3.95 to 5.85 GHz
35UM70N	N(m), metric, 5.85 to 8.20 GHz
35UM84N	N(m), metric, 7.05 to 10.00 GHz
35UM100N	N(m), metric, 8.20 to 12.40 GHz
35UM120N	N(m), metric, 10.00 to 15.00 GHz
35UM140N	N(m), metric, 12.40 to 18.0 GHz

Model/Order No.	Name
	Coaxial adapter
35UM220K	K(m), metric, 17.00 to 26.5 GHz
35UA187N	N(m), US, 3.95 to 5.85 GHz
35UA137N	N(m), US, 5.85 to 8.20 GHz
35UA112N	N(m), US, 7.05 to 10.00 GHz
35UA90N	N(m), US, 8.20 to 12.40 GHz
35UA62N	N(m), US, 12.40 to 18.0 GHz
35UA42K	K(m), US, 17.00 to 26.5 GHz